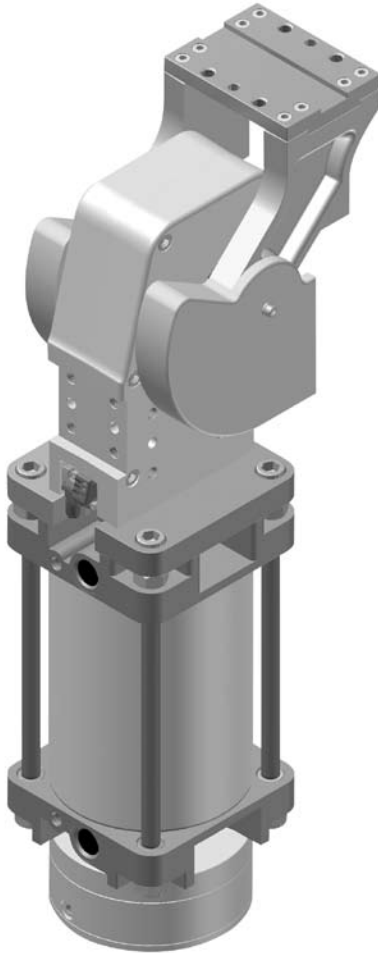




## LAGP Series Pneumatic Power Pivot



### Features

- Available in three different sizes
- Four standard opening angles available
- Optional integrated stopping brake
- Saddle is chrome-plated steel that has a precision ground surface and is case hardened
- Linear motion guided by roller bearings and hardened steel guide
- Rotary motion guided by conical roller bearings
- External pre-stop assures accuracy and repeatability of saddle
- Remains locked in closed position even when air pressure is removed
- Unique "programmable" all metal sensor with M12 swivel connector

### General Specifications

Weight:

LAGP170: 23 Kg (50.7 lbs)

LAGP300: 35 Kg (77.2 lbs)

LAGP600: 52 Kg (114.6 lbs)

Operating Pressure:

Minimum: 2.75 Bar (40 PSI)

Maximum: 8 Bar (115 PSI)

Note: Brake requires minimum pressure of 4.5 Bar (65 PSI)

Operating Temperature: 5° to 45° C (40° to 113°F)

Class Protection: IP65

Opening Angles: 45°, 60°, 90°, 120°

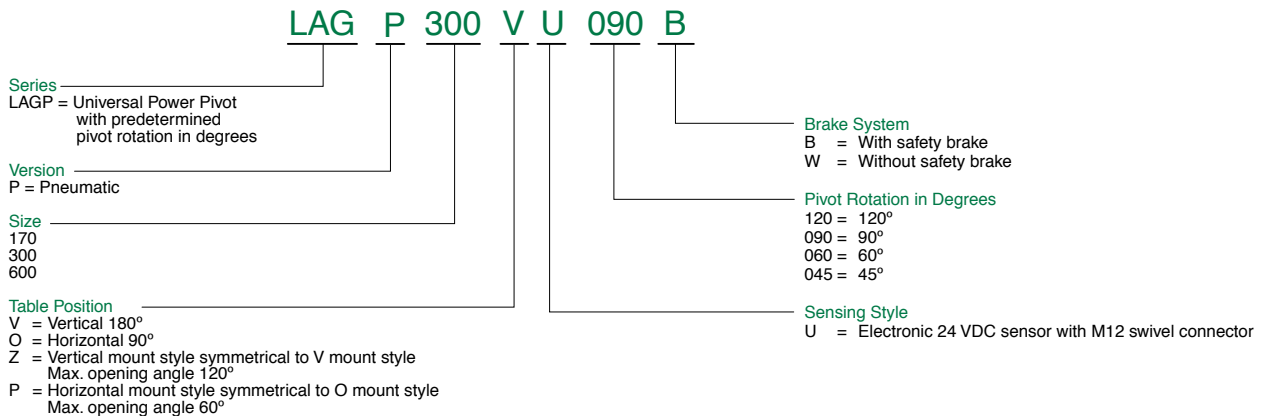
Holding Capacity

LAGP170: 4000 Nm (2950 ft-lbs)

LAGP300: 6000 Nm (4425 ft-lbs)

LAGP600: 8000 Nm (5900 ft-lbs)

### How to Order



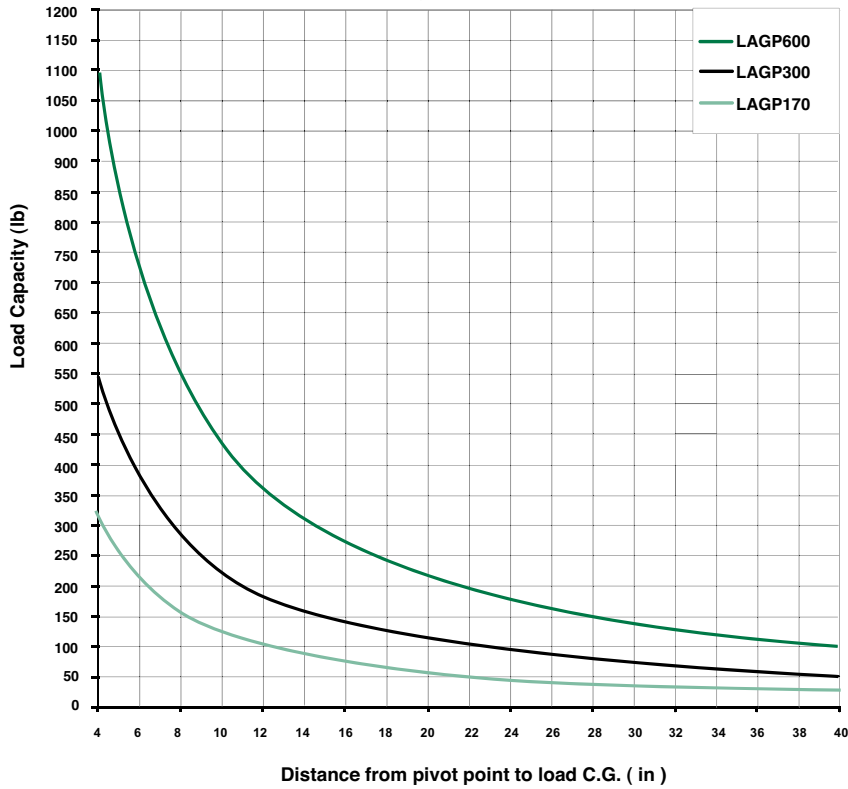


## LAGP Series Pneumatic Power Pivot

### Maximum Applicable Load

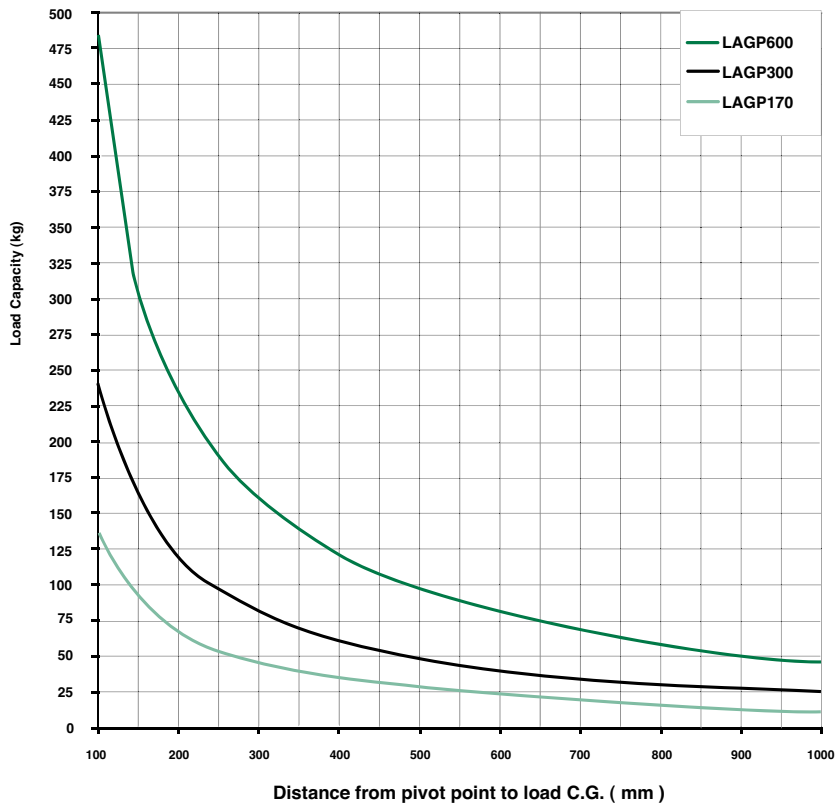
English

operating pressure : 60 PSI



Metric

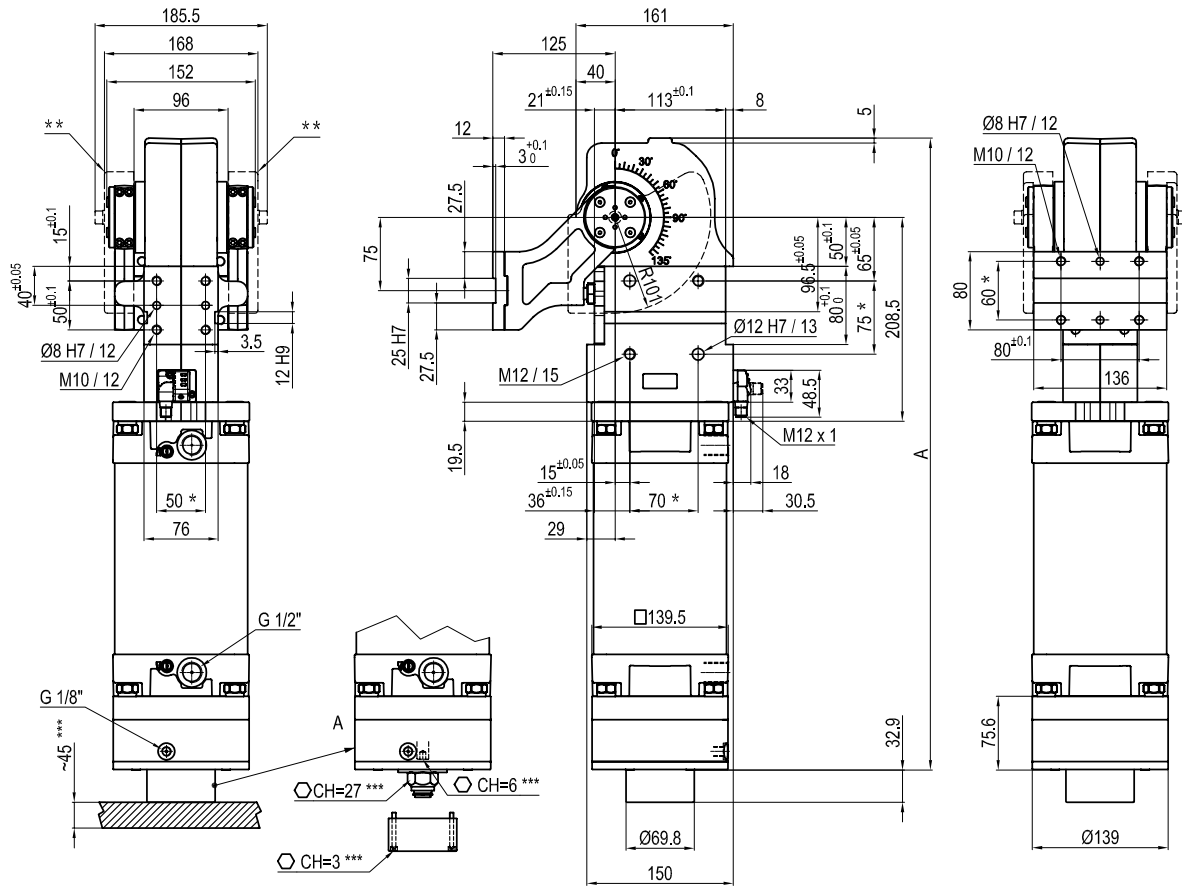
operating pressure : 4 bar





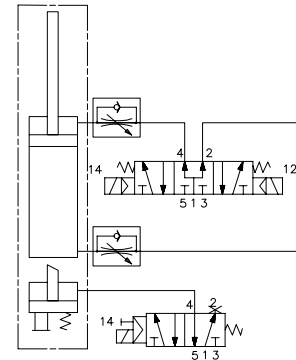
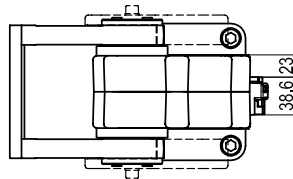
## LAGP Series Pneumatic Power Pivot

### LAGP170VU\_\_ B Pneumatic Power Pivot



Passive Safety brake:  
it stops in absence of signal  
conforming to 89/392/CEE  
Directive

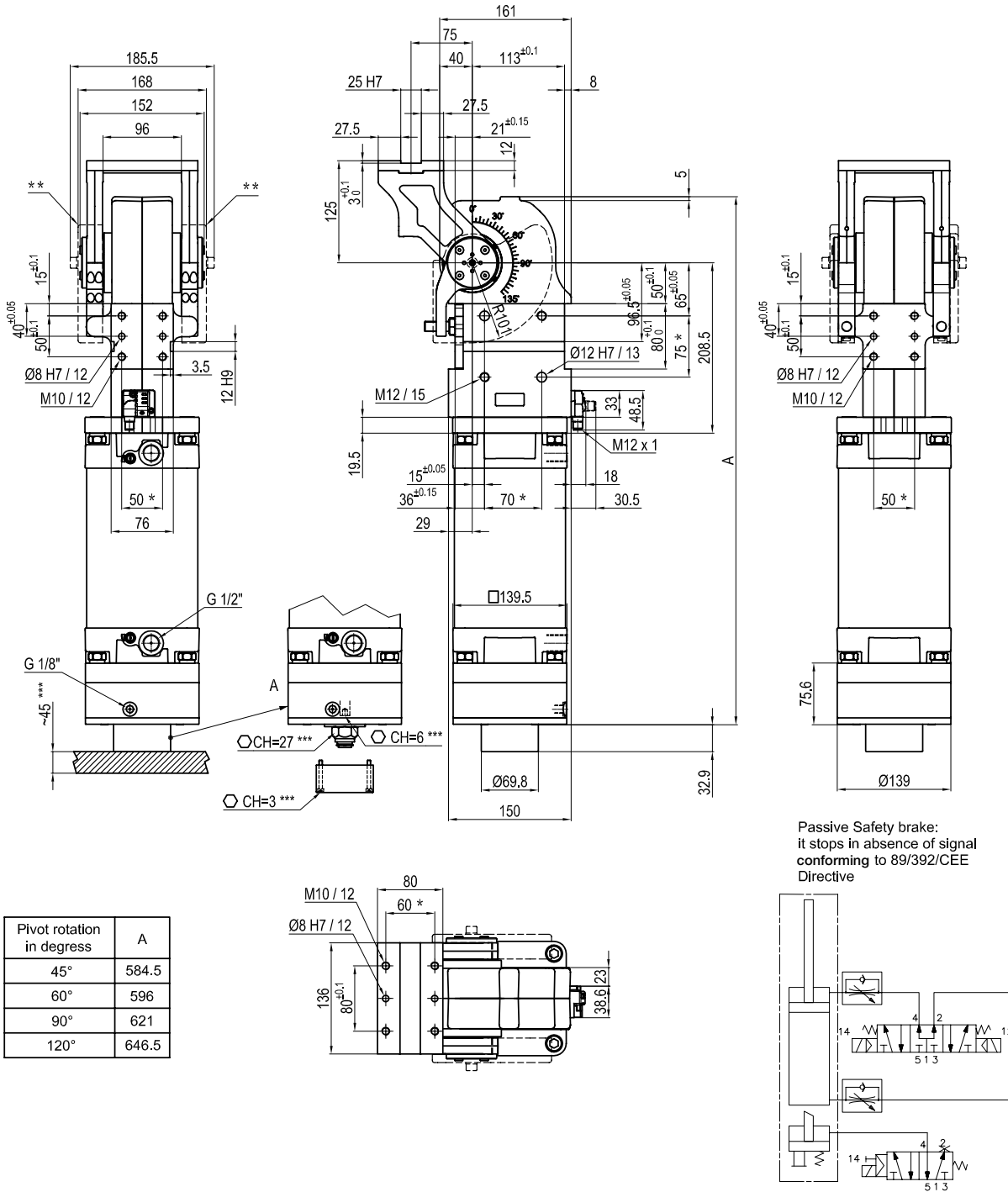
Pivot rotation in degrees	A
45°	584.5
60°	596
90°	621
120°	646.5



- \* : TOLERANCE BETWEEN DOWEL HOLES ± 0.02, TO SCREW HOLES ± 0.1
- \*\* : TO BE ORDERED SEPARATELY
- \*\*\* : AREA TO ACCESS THE MANUAL UNBLOCKING OF THE SAFETY BRAKE



### LAGP170OU\_\_B Pneumatic Power Pivot



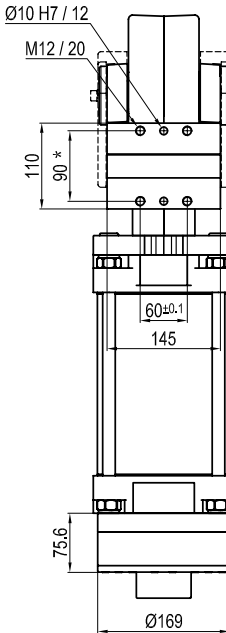
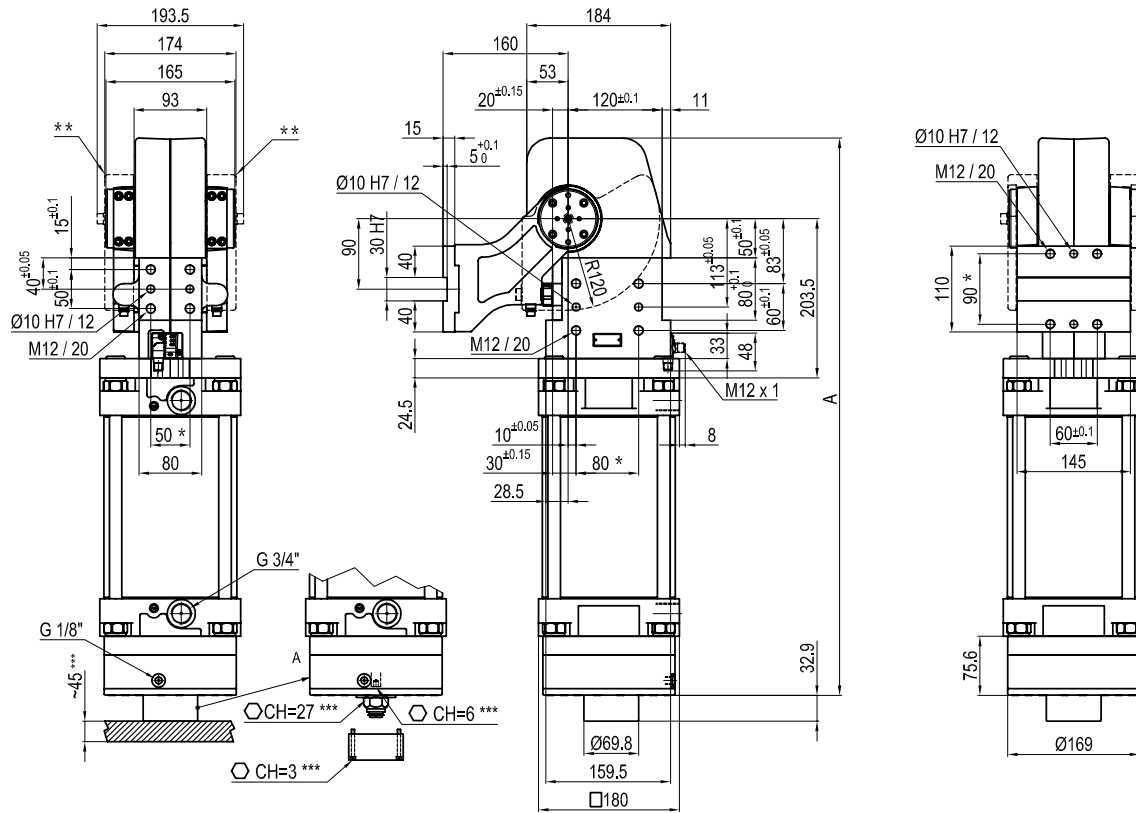
Passive Safety brake:  
it stops in absence of signal  
conforming to 89/392/CEE  
Directive

\* : TOLERANCE BETWEEN DOWEL HOLES  $\pm 0.02$ , TO SCREW HOLES  $\pm 0.1$   
 \*\* : TO BE ORDERED SEPARATELY  
 \*\*\* : AREA TO ACCESS THE MANUAL UNBLOCKING OF THE SAFETY BRAKE



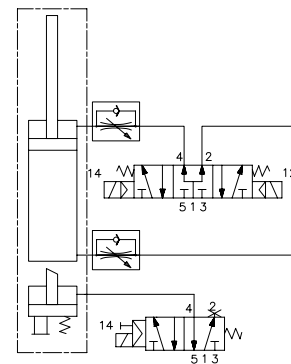
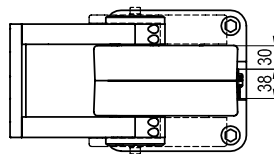
## LAGP Series Pneumatic Power Pivot

### LAGP300VU\_\_B Pneumatic Power Pivot



Passive Safety brake:  
it stops in absence of signal  
conforming to 89/392/CEE  
Directive

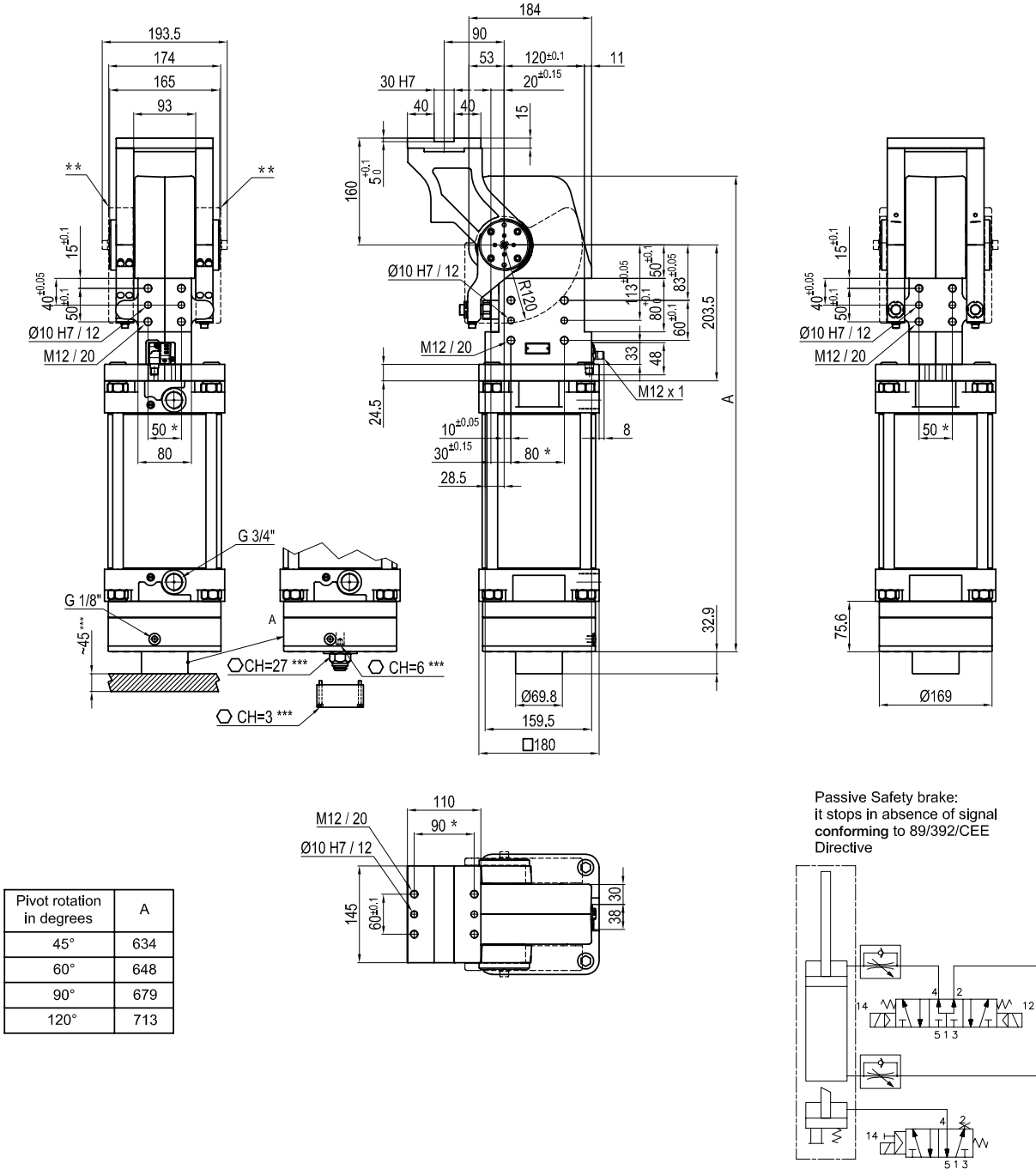
Pivot rotation in degrees	A
45°	634
60°	648
90°	679
120°	713



- \* : TOLERANCE BETWEEN DOWEL HOLES  $\pm 0.02$ , TO SCREW HOLES  $\pm 0.1$
- \*\* : TO BE ORDERED SEPARATELY
- \*\*\* : AREA TO ACCESS THE MANUAL UNBLOCKING OF THE SAFETY BRAKE



### LAGP300OU\_\_B Pneumatic Power Pivot

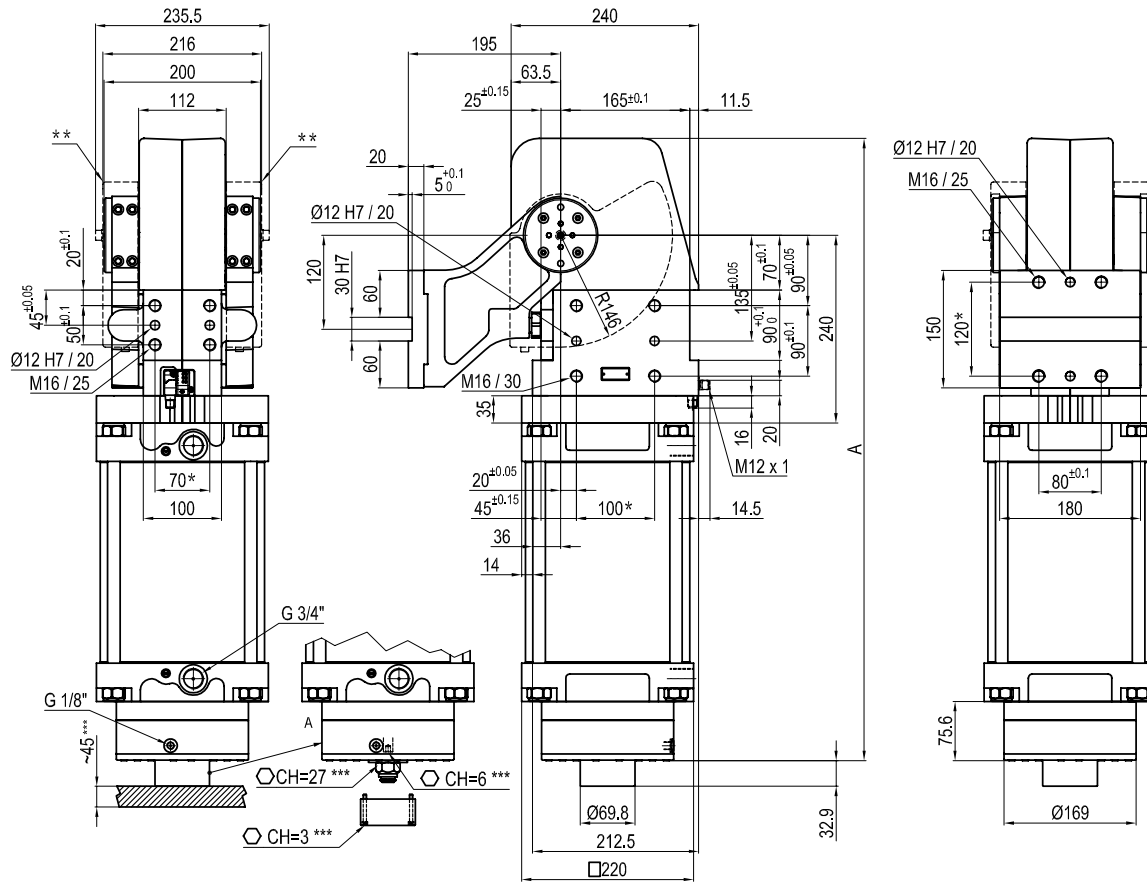


\* : TOLERANCE BETWEEN DOWEL HOLES ± 0.02, TO SCREW HOLES ± 0.1  
 \*\* : TO BE ORDERED SEPARATELY  
 \*\*\* : AREA TO ACCESS THE MANUAL UNBLOCKING OF THE SAFETY BRAKE

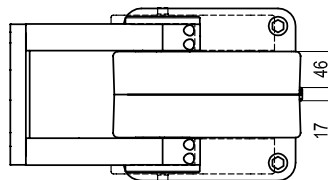


## LAGP Series Pneumatic Power Pivot

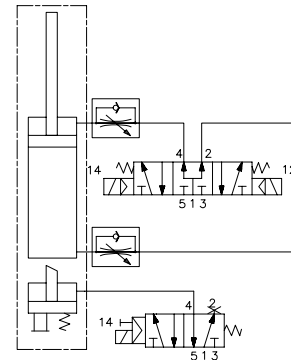
### LAGP600VU\_\_B Pneumatic Power Pivot



Pivot rotation in degrees	A
45°	702.5
60°	718.5
90°	754.5
120°	795.5



Passive Safety brake:  
it stops in absence of signal  
conforming to 89/392/CEE  
Directive

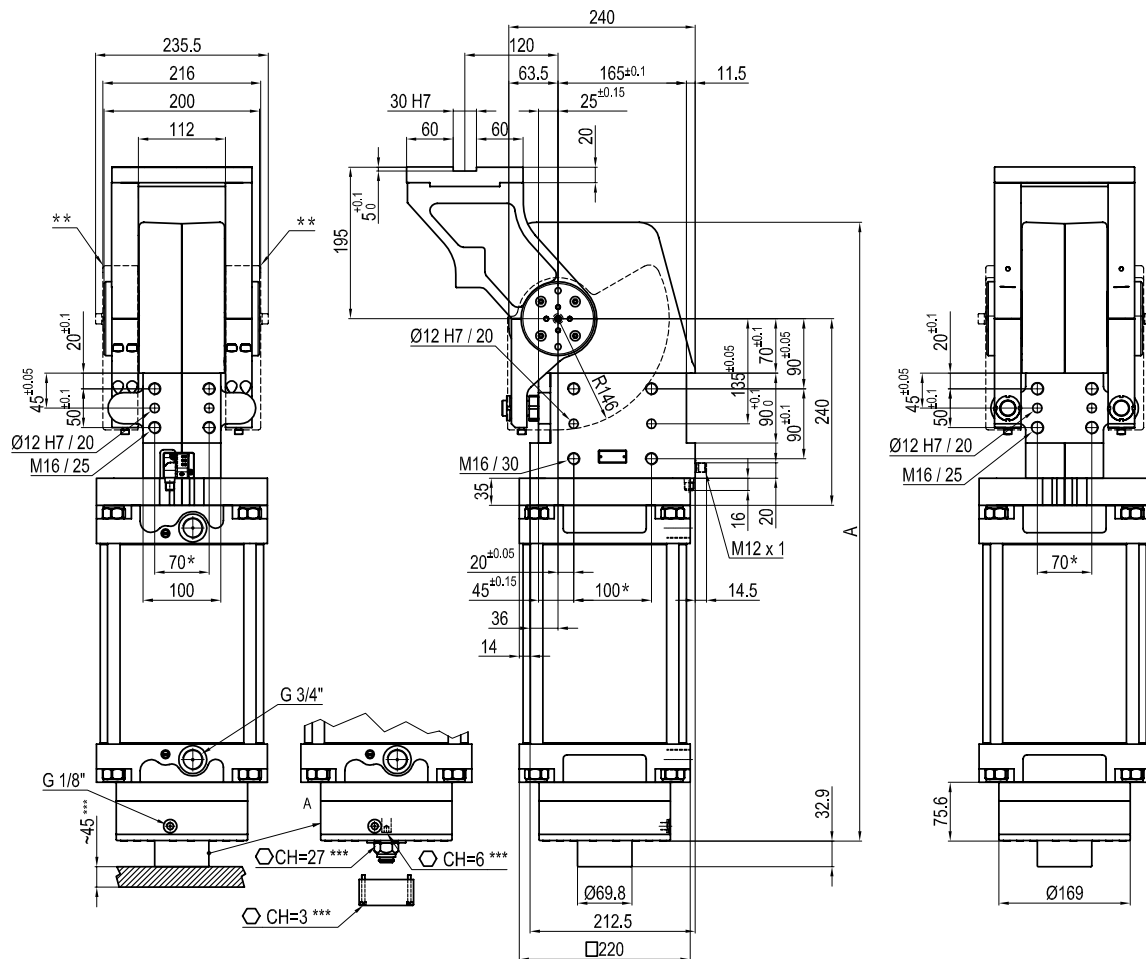


\* : TOLERANCE BETWEEN DOWEL HOLES  $\pm 0.02$ , TO SCREW HOLES  $\pm 0.1$   
 \*\* : TO BE ORDERED SEPARATELY  
 \*\*\* : AREA TO ACCESS THE MANUAL UNBLOCKING OF THE SAFETY BRAKE



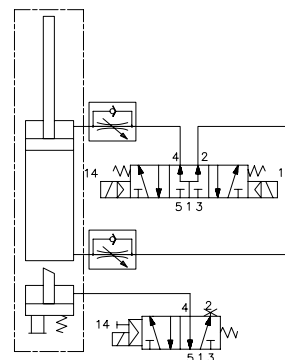
## LAGP Series Pneumatic Power Pivot

### LAGP600OU\_\_B Pneumatic Power Pivot



Pivot rotation in degrees	A
45°	702.5
60°	718.5
90°	754.5
120°	795.5

Passive Safety brake:  
it stops in absence of signal  
conforming to 89/392/CEE  
Directive



\* : TOLERANCE BETWEEN DOWEL HOLES ± 0.02, TO SCREW HOLES ± 0.1  
 \*\* : TO BE ORDERED SEPARATELY  
 \*\*\* : AREA TO ACCESS THE MANUAL UNBLOCKING OF THE SAFETY BRAKE